



**REGIONAL SPECIALISED METEOROLOGICAL CENTRE -TROPICAL CYCLONES, NEW DELHI**  
**TROPICAL WEATHER OUTLOOK**

**DEMS-RSMC TROPICAL CYCLONES NEW DELHI DATED 29.07.2025**

**TROPICAL WEATHER OUTLOOK FOR THE NORTH INDIAN OCEAN (THE BAY OF BENGAL OF BENGAL AND THE ARABIAN SEA) VALID FOR THE NEXT 168 HOURS ISSUED AT 0600 UTC OF 29.07.2025 BASED ON 0300 UTC OF 29.07.2025.**

**LAND:**

**Sub: Low pressure area over northwest Madhya Pradesh**

Yesterday's low-pressure area over northwest Madhya Pradesh and adjoining east Rajasthan lay over northwest Madhya Pradesh at 0000 UTC of today, the 29<sup>th</sup> July, 2025 and persisted over the same region at 0300 UTC of today, the 29<sup>th</sup> July, 2025. The associated cyclonic circulation extended upto 5.8 km above mean sea level tilting southwestwards with height.

As per INSAT 3D Imagery, scattered to broken low and medium clouds with embedded intense to very intense convection lay over east Rajasthan, Madhya Pradesh (minimum cloud top temperature -60°C to -80°C) and moderate to intense convection lay over Gujarat, west Uttar Pradesh, south Haryana (minimum cloud top temperature -40°C to -50°C).

**BAY OF BENGAL:**

Scattered to broken low and medium clouds with embedded intense to very intense convection lay over north & extreme southeast Bay of Bengal, north Andaman Sea, Arakan coast, Gulf of Martaban & Tenasserim coast. Scattered low and medium clouds with embedded moderate to intense convection lay over eastcentral & rest of southeast Bay of Bengal, south Andaman Sea and isolated weak to moderate convection lay over rest of Bay of Bengal.

**\*PROBABILITY OF CYCLOGENESIS (FORMATION OF DEPRESSION) DURING NEXT 168 HRS:**

24 HOURS	24-48 HOURS	48-72 HOURS	72-96 HOURS	96-120 HOURS	120-144 HOURS	144-168 HOURS
NIL	NIL	NIL	NIL	NIL	NIL	NIL

**\*NOTE: EVERY 24HR FORECAST IS VALID UPTO 0300 UTC (0830 IST) OF NEXT DAY**

**ARABIAN SEA:**

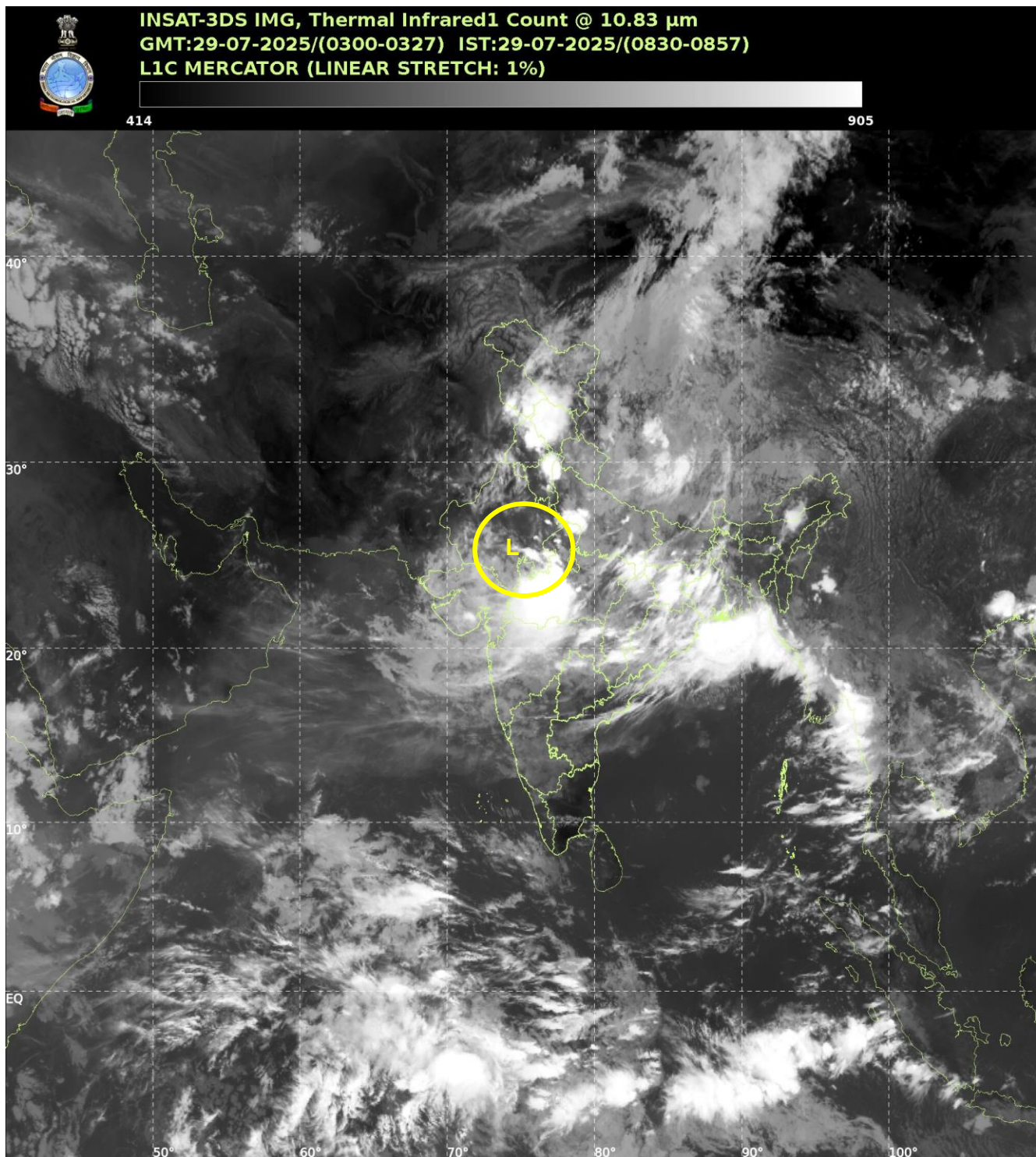
Scattered low and medium clouds with embedded moderate to intense convection lay over south Arabian Sea & Maldives area. Scattered low and medium clouds with embedded weak to moderate convection lay over rest of Arabian Sea, Gulf of Kutch, Gulf of Cambay & Lakshadweep Islands area.

**\*PROBABILITY OF CYCLOGENESIS (FORMATION OF DEPRESSION) DURING NEXT 168 HRS:**

24 HOURS	24-48 HOURS	48-72 HOURS	72-96 HOURS	96-120 HOURS	120-144 HOURS	144-168 HOURS
NIL	NIL	NIL	NIL	NIL	NIL	NIL

**\*NOTE: EVERY 24HR FORECAST IS VALID UPTO 0300 UTC (0830 IST) OF NEXT DAY**

**REMARKS: NIL**



L: Low Pressure Area

Cloud distribution: (a) Isolated: <25%, Scattered:25-50%, Broken: 51-75%, Solid:>75%, Convection Intensity: (a) Weak: Cloud Top Temperature(CTT)>-25°C,(b)Moderate:CTT:-25°Cto-40°C,(c)Intense:CTT: -41°Cto -70°Cand(d)Very Intense::Less than -70°C  
 PROBABILITYOFCYCLOGENESIS(FORMATIONOFDEPRESSION):NIL:0%,LOW:1-33%,MODERATE:34-66%ANDHIGH:67-100%  
 ThisisaguidanceBulletinforWMO/ESCAPPanelMembercountries.VisitrespectiveNationalwebsitesforCountryspecificBulletins